

# OR2T2/OR2T35 Antibody



PACO02882

---

## Product Information

**Size:**

50ug

**Reactivity:**

Human

**Source:**

Rabbit

**Isotype:**

IgG

**Applications:**

ELISA, WB, IF

**Recommended dilutions:**

WB:1:500-1:2000, IF:1:200-1:1000

**Protein Background:****Gene ID:**

OR2T2/OR2T35

**Uniprot**

Q61F00/Q8NGX2

**Synonyms:**

OR2T2; OR2T2P; Olfactory receptor 2T2; Olfactory receptor OR1-43; OR2T35; Olfactory receptor 2T35; Olfactory receptor OR1-66

**Immunogen:**

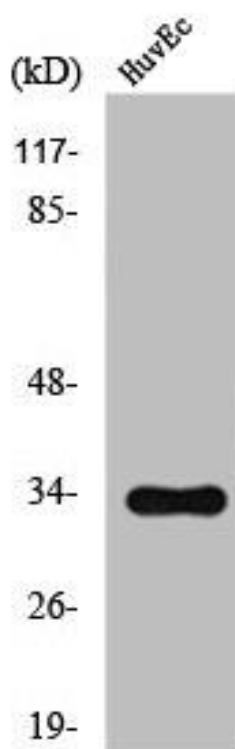
Synthesized peptide derived from the Internal region of human Olfactory receptor 2T2/35.

**Storage:**

Liquid in PBS containing 50% glycerol, 0.5% BSA and 0.02% sodium azide.

## Product Images

---



Western Blot analysis of HuvEc cells using Olfactory receptor 2T2/35 Polyclonal Antibody.