

Phospho-MAPT (T205) Antibody



PACO02890

Product Information

Size:

50ug

Reactivity:

Human, Mouse, Rat

Source:

Rabbit

Isotype:

IgG

Applications:

ELISA, WB

Recommended dilutions:

WB:1:500-1:2000

Protein Background:**Gene ID:**

MAPT

Uniprot

P10636

Synonyms:

MAPT; MAPTL; MTBT1; TAU; Microtubule-associated protein tau; Neurofibrillary tangle protein; Paired helical filament-tau; PHF-tau

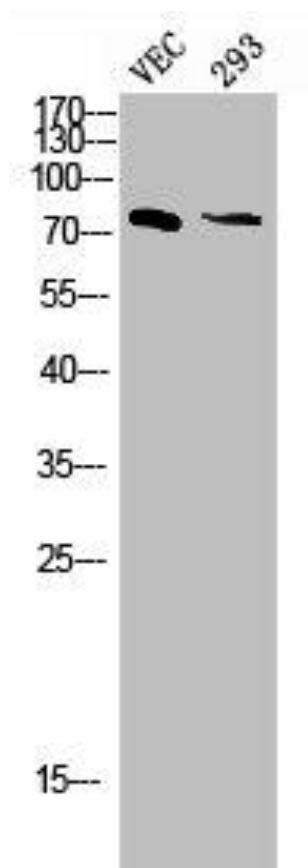
Immunogen:

Synthesized peptide derived from human Tau around the phosphorylation site of T205.

Storage:

Liquid in PBS containing 50% glycerol, 0.5% BSA and 0.02% sodium azide.

Product Images



Western blot analysis of VEC 293 lysis using Phospho-Tau (T205) antibody.