

Phospho-MEF2D (S444) Antibody



PACO02899

Product Information

Size:

50ug

Reactivity:

Human, Mouse, Rat

Source:

Rabbit

Isotype:

IgG

Applications:

ELISA, WB, IHC

Recommended dilutions:

WB:1:500-1:2000, IHC:1:100-1:300

Protein Background:

Gene ID:

MEF2D

Uniprot

Q14814

Synonyms:

MEF2D; Myocyte-specific enhancer factor 2D

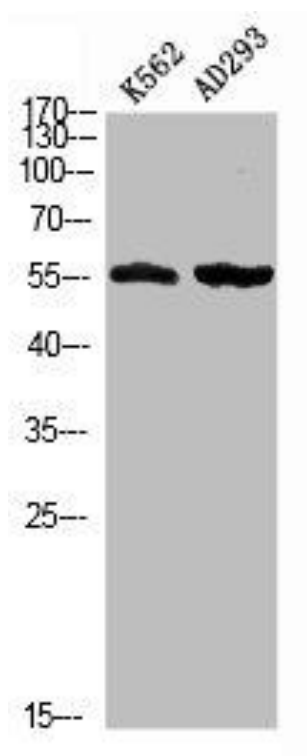
Immunogen:

Synthesized peptide derived from human MEF-2D around the phosphorylation site of S444.

Storage:

Liquid in PBS containing 50% glycerol, 0.5% BSA and 0.02% sodium azide.

Product Images



Western blot analysis of K562 AD293 using Phospho-MEF-2D (S444) antibody.