

Phospho-MAP3K1 (T1402) Antibody



PACO02901

Product Information

Size:

50ug

Reactivity:

Human, Mouse, Rat

Source:

Rabbit

Isotype:

IgG

Applications:

ELISA, WB, IHC

Recommended dilutions:

WB:1:500-1:2000, IHC:1:100-1:300

Protein Background:**Gene ID:**

MAP3K1

Uniprot

Q13233

Synonyms:

MAP3K1; MAPKKK1; MEKK; MEKK1; Mitogen-activated protein kinase kinase kinase 1; MAPK/ERK kinase kinase 1; MEK kinase 1; MEKK 1

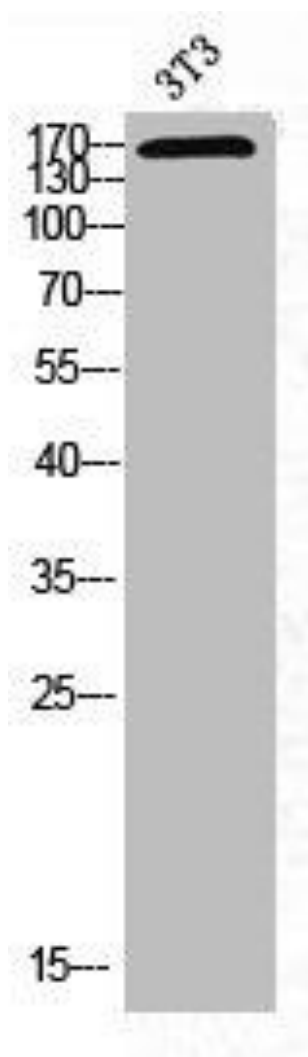
Immunogen:

Synthesized peptide derived from human MEK Kinase-1 around the phosphorylation site of T1402.

Storage:

Liquid in PBS containing 50% glycerol, 0.5% BSA and 0.02% sodium azide.

Product Images



Western Blot analysis of NIH-3T3 cells using Phospho-MEK Kinase-1 (T1402) Polyclonal Antibody.