

# Phospho-ATF1 (S63) Antibody



PACO02920

---

## Product Information

**Size:**

50ug

**Reactivity:**

Human, Mouse

**Source:**

Rabbit

**Isotype:**

IgG

**Applications:**

ELISA, WB

**Recommended dilutions:**

WB:1:500-1:2000

**Protein Background:****Gene ID:**

ATF1

**Uniprot**

P18846

**Synonyms:**

ATF1; Cyclic AMP-dependent transcription factor ATF-1; cAMP-dependent transcription factor ATF-1; Activating transcription factor 1; Protein TREB36

**Immunogen:**

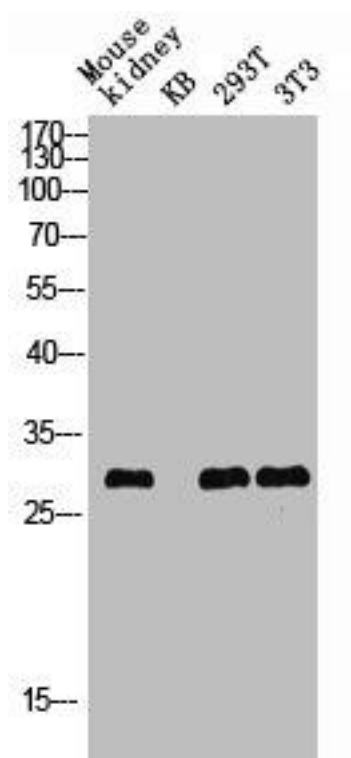
Synthesized peptide derived from human ATF-1 around the phosphorylation site of S63.

**Storage:**

Liquid in PBS containing 50% glycerol, 0.5% BSA and 0.02% sodium azide.

## Product Images

---



Western blot analysis of Mouse-kidney KB 293T 3T3 lysis using Phospho-ATF-1 (S63) antibody.