

# Cleaved-NOTCH2 (A1734) Antibody



PACO02934

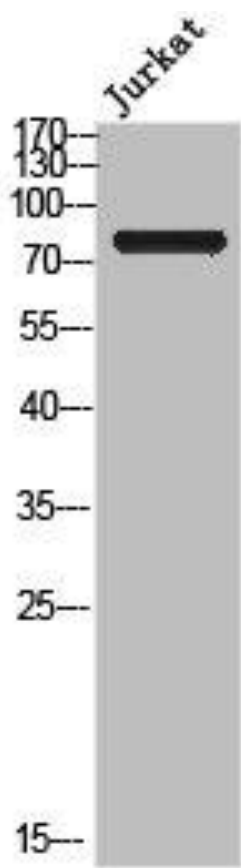
---

## Product Information

<b>Size:</b> 50ug	<b>Protein Background:</b>
<b>Reactivity:</b> Human, Mouse, Rat	<b>Gene ID:</b> NOTCH2
<b>Source:</b> Rabbit	<b>Uniprot</b> Q04721
<b>Isotype:</b> IgG	<b>Synonyms:</b> NOTCH2; Neurogenic locus notch homolog protein 2; Notch 2; hN2
<b>Applications:</b> ELISA, WB	<b>Immunogen:</b> Synthesized peptide derived from the Internal region of human Notch 2.
<b>Recommended dilutions:</b> WB:1:500-1:2000	<b>Storage:</b> Liquid in PBS containing 50% glycerol, 0.5% BSA and 0.02% sodium azide.

## Product Images

---



Western Blot analysis of Jurkat cells using Cleaved-Notch 2 (A1734) Polyclonal Antibody.