

# Phospho-PAK1 (T212) Antibody



PACO02947

---

## Product Information

**Size:**

50ug

**Reactivity:**

Human, Mouse, Rat

**Source:**

Rabbit

**Isotype:**

IgG

**Applications:**

ELISA, WB, IHC

**Recommended dilutions:**

WB:1:500-1:2000, IHC:1:100-1:300

**Protein Background:****Gene ID:**

PAK1

**Uniprot**

Q13153

**Synonyms:**

PAK1; Serine/threonine-protein kinase PAK 1; Alpha-PAK; p21-activated kinase 1; PAK-1; p65-PAK

**Immunogen:**

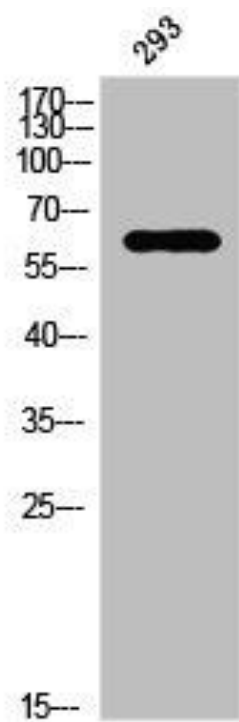
Synthesized peptide derived from human PAKalpha around the phosphorylation site of T212.

**Storage:**

Liquid in PBS containing 50% glycerol, 0.5% BSA and 0.02% sodium azide.

## Product Images

---



Western Blot analysis of 293 cells using Phospho-PAKalpha (T212) Polyclonal Antibody.