

# Phospho-PGR (S400) Antibody



PACO02971

---

## Product Information

**Size:**

50ug

**Reactivity:**

Human

**Source:**

Rabbit

**Isotype:**

IgG

**Applications:**

ELISA, WB, IF

**Recommended dilutions:**

WB:1:500-1:2000, IF:1:200-1:1000

**Protein Background:****Gene ID:**

PGR

**Uniprot**

P06401

**Synonyms:**

PGR; NR3C3; Progesterone receptor; PR; Nuclear receptor subfamily 3 group C member 3

**Immunogen:**

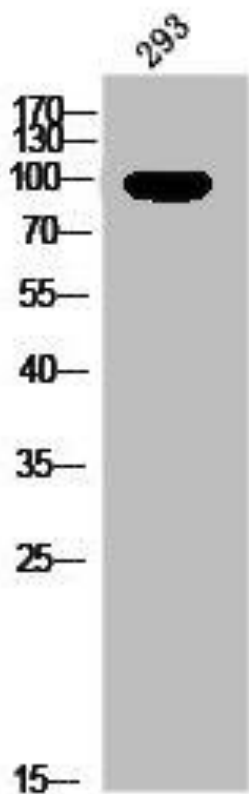
Synthesized peptide derived from human PR around the phosphorylation site of S400.

**Storage:**

Liquid in PBS containing 50% glycerol, 0.5% BSA and 0.02% sodium azide.

## Product Images

---



Western Blot analysis of 293 cells using Phospho-PR (S400) Polyclonal Antibody.