

FGFRL1 Antibody



PACO02979

Product Information

Size:

50ug

Reactivity:

Human, Mouse

Source:

Rabbit

Isotype:

IgG

Applications:

ELISA, WB

Recommended dilutions:

WB:1:500-1:2000

Protein Background:

Gene ID:

FGFRL1

Uniprot

Q8N441

Synonyms:

FGFRL1; FGFR5; FHFR; Fibroblast growth factor receptor-like 1; FGF receptor-like protein 1; FGF homologous factor receptor; FGFR-like protein; Fibroblast growth factor receptor 5; FGFR-5

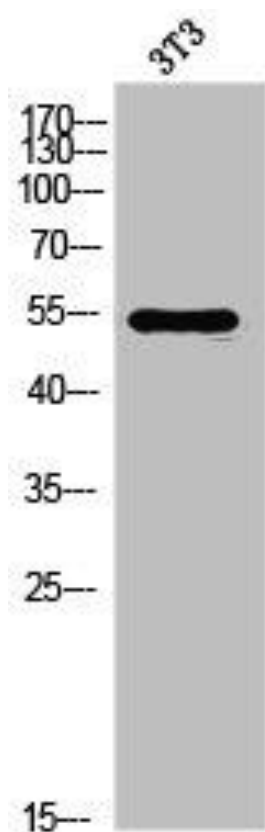
Immunogen:

Synthesized peptide derived from the Internal region of human FGFR-5.

Storage:

Liquid in PBS containing 50% glycerol, 0.5% BSA and 0.02% sodium azide.

Product Images



Western Blot analysis of 3T3 cells using FGFR-5 Polyclonal Antibody.