

Acetyl-Histone H2B (K15) Antibody



PACO02980

Product Information

Size:

50ug

Reactivity:

Human, Mouse

Source:

Rabbit

Isotype:

IgG

Applications:

ELISA, WB, IHC, IF

Recommended dilutions:

WB:1:500-1:2000, IHC:1:100-1:300,
IF:1:200-1:1000

Protein Background:

Gene ID:

H2BFS

Uniprot

P57053

Synonyms:

H2BFS; Histone H2B type F-S; Histone H2B. s; H2B/s

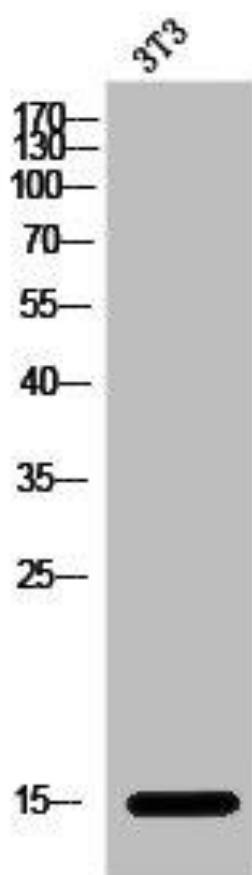
Immunogen:

Synthesized peptide derived from human Histone H2B around the acetylation site of K15.

Storage:

Liquid in PBS containing 50% glycerol, 0.5% BSA and 0.02% sodium azide.

Product Images



Western Blot analysis of 3T3 cells using Acetyl-Histone H2B (K15) Polyclonal Antibody.