

# Phospho-PRKCA (Y657) Antibody



PACO02999

---

## Product Information

**Size:**

50ug

**Reactivity:**

Human, Mouse, Rat

**Source:**

Rabbit

**Isotype:**

IgG

**Applications:**

ELISA, WB

**Recommended dilutions:**

WB:1:500-1:2000

**Protein Background:**

**Gene ID:**

PRKCA

**Uniprot**

P17252

**Synonyms:**

PRKCA; PKCA; PRKACA; Protein kinase C alpha type; PKC-A; PKC-alpha

**Immunogen:**

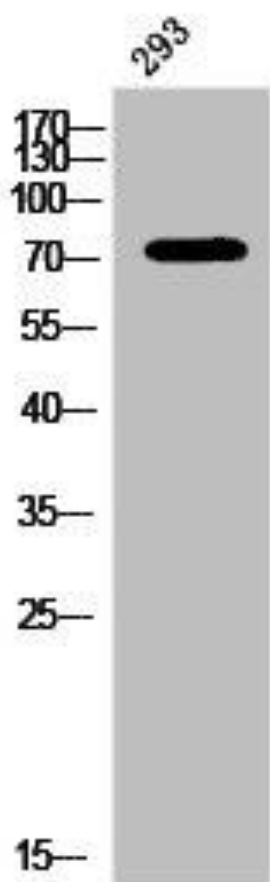
Synthesized peptide derived from human PKC alpha around the phosphorylation site of Y657.

**Storage:**

Liquid in PBS containing 50% glycerol, 0.5% BSA and 0.02% sodium azide.

## Product Images

---



Western Blot analysis of 293 cells using Phospho-PKC alpha (Y657) Polyclonal Antibody.