

**Phospho-
PRKCA/PRKCB/PRKCD/PRKCE/PRKCG/PRKCH/PR
KCQ/PRKCZ (T497) Antibody
PACO03002**



Product Information

Size:

50ug

Reactivity:

Human, Mouse, Rat

Source:

Rabbit

Isotype:

IgG

Applications:

ELISA, WB, IHC, IF

Recommended dilutions:

WB:1:500-1:2000, IHC:1:100-1:300,
IF:1:200-1:1000

Protein Background:

Gene ID:

PRKCA/PRKCB/PRKCD/PRKCE/PRKCG/PRKCH/PRKCQ/PRKCZ

Uniprot

P17252/P05771/Q05655/Q02156/P05129/P24723/Q04759/Q05513

Synonyms:

PRKCA; PKCA; PRKACA; Protein kinase C alpha type; PKC-A; PKC-alpha; PRKCB; PKCB; PRKCB1; Protein kinase C beta type; PKC-B; PKC-beta; PRKCD; Protein kinase C delta type; Tyrosine-protein kinase PRKCD; nPKC-delta; PRKCE; PKCE; Protein kinase

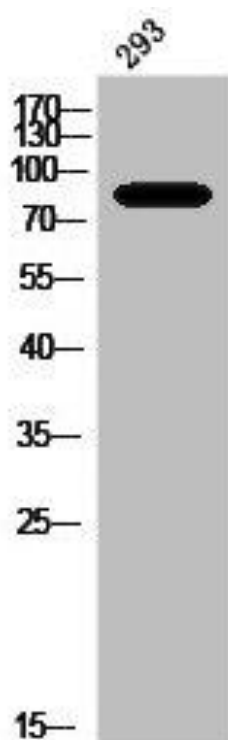
Immunogen:

Synthesized peptide derived from human PKC around the phosphorylation site of T497.

Storage:

Liquid in PBS containing 50% glycerol, 0.5% BSA and 0.02% sodium azide.

Product Images



Western Blot analysis of 293 cells using Phospho-PKC (T497) Polyclonal Antibody.