

Phospho-PRKCZ (T560) Antibody



PACO03016

Product Information

Size:

50ug

Reactivity:

Human, Mouse, Rat, Monkey

Source:

Rabbit

Isotype:

IgG

Applications:

ELISA, WB, IHC

Recommended dilutions:

WB:1:500-1:2000, IHC:1:100-1:300

Protein Background:**Gene ID:**

PRKCZ

Uniprot

Q05513

Synonyms:

PRKCZ; PKC2; Protein kinase C zeta type; nPKC-zeta

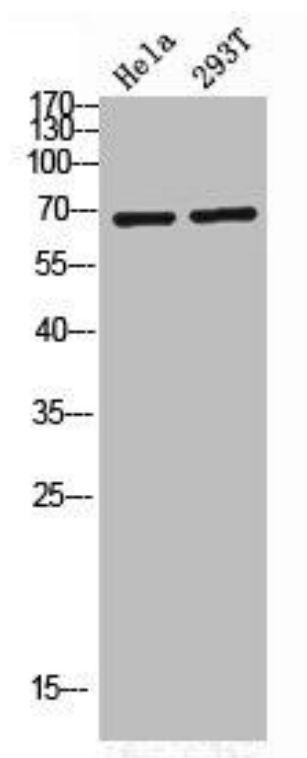
Immunogen:

Synthesized peptide derived from human PKC Zeta around the phosphorylation site of T560.

Storage:

Liquid in PBS containing 50% glycerol, 0.5% BSA and 0.02% sodium azide.

Product Images



Western Blot analysis of HELA 293T cells using Phospho-PKC Zeta (T560) Polyclonal Antibody.