

# ZNF287 Antibody



PACO03038

---

## Product Information

**Size:**

50ug

**Reactivity:**

Human

**Source:**

Rabbit

**Isotype:**

IgG

**Applications:**

ELISA, WB, IHC

**Recommended dilutions:**

WB:1:500-1:2000, IHC:1:100-1:300

**Protein Background:**

**Gene ID:**

ZNF287

**Uniprot**

Q9HBT7

**Synonyms:**

ZNF287; ZKSCAN13; Zinc finger protein 287; Zinc finger protein with KRAB and SCAN domains 13

**Immunogen:**

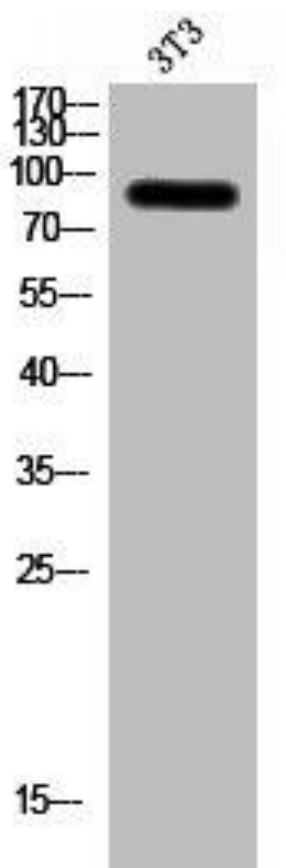
Synthesized peptide derived from the Internal region of human ZNF287.

**Storage:**

Liquid in PBS containing 50% glycerol, 0.5% BSA and 0.02% sodium azide.

## Product Images

---



Western Blot analysis of 3T3 cells using ZNF287 Polyclonal Antibody.