

GPR158 Antibody



PACO03043

Product Information

Size:

50ug

Reactivity:

Human, Mouse

Source:

Rabbit

Isotype:

IgG

Applications:

ELISA, WB, IHC, IF

Recommended dilutions:

WB:1:500-1:2000, IHC:1:100-1:300,
IF:1:200-1:1000

Protein Background:**Gene ID:**

GPR158

Uniprot

Q5T848

Synonyms:

GPR158; KIAA1136; Probable G-protein coupled receptor 158

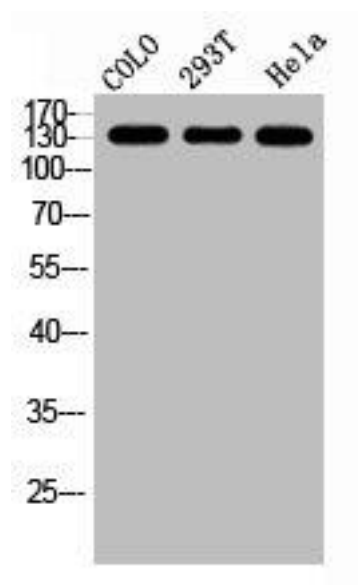
Immunogen:

Synthesized peptide derived from the N-terminal region of human GPR158.

Storage:

Liquid in PBS containing 50% glycerol, 0.5% BSA and 0.02% sodium azide.

Product Images



Western Blot analysis of COLO 293T HELA cells using GPR158 Polyclonal Antibody.