

Phospho-RB1 (T826) Antibody



PACO03057

Product Information

Size:

50ug

Reactivity:

Human, Mouse, Rat

Source:

Rabbit

Isotype:

IgG

Applications:

ELISA, WB, IHC, IF

Recommended dilutions:

WB:1:500-1:2000, IHC:1:100-1:300,
IF:1:200-1:1000

Protein Background:**Gene ID:**

RB1

Uniprot

P06400

Synonyms:

RB1; Retinoblastoma-associated protein; p105-Rb; pRb; Rb; pp110

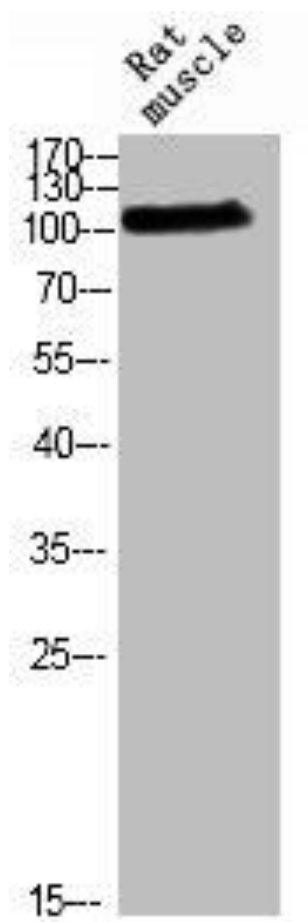
Immunogen:

Synthesized peptide derived from human Rb around the phosphorylation site of T826.

Storage:

Liquid in PBS containing 50% glycerol, 0.5% BSA and 0.02% sodium azide.

Product Images



Western blot analysis of RAT-muscle using p-Rb (T826) antibody.