

# Cleaved-CASP3 (D175) Antibody



PACO06028

---

## Product Information

**Size:**

50ug

**Reactivity:**

Human

**Source:**

Rabbit

**Isotype:**

IgG

**Applications:**

ELISA, WB, IHC

**Recommended dilutions:**

ELISA:1:20000, WB:1:500-1:2000,  
IHC:1:100-1:300

**Protein Background:**

**Gene ID:**

CASP3

**Uniprot**

P42574

**Synonyms:**

CASP3; CPP32; Caspase-3; CASP-3; Apopain; Cysteine protease CPP32; CPP-32; Protein Yama; SREBP cleavage activity 1; SCA-1

**Immunogen:**

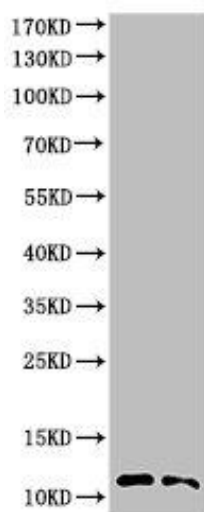
Synthesized peptide derived from the Internal region of human Caspase-3 p12.

**Storage:**

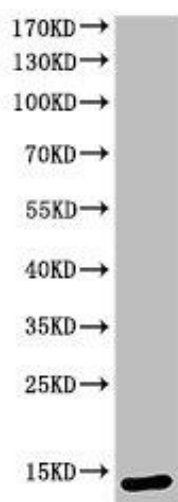
Liquid in PBS containing 50% glycerol, 0.5% BSA and 0.02% sodium azide.

## Product Images

---



Western Blot analysis of KB MCF7 cells using Cleaved-Caspase-3 p12 (D175) Polyclonal Antibody.



Western Blot analysis of KB cells using Cleaved-Caspase-3 p12 (D175) Polyclonal Antibody.