

Cleaved-CASP3 (D175) Antibody



PACO06029

Product Information

Size:

50ug

Reactivity:

Human, Mouse, Rat

Source:

Rabbit

Isotype:

IgG

Applications:

ELISA, WB, IHC

Recommended dilutions:

ELISA:1:20000, WB:1:500-1:2000,
IHC:1:100-1:300

Protein Background:

Gene ID:

CASP3

Uniprot

P42574

Synonyms:

CASP3; CPP32; Caspase-3; CASP-3; Apopain; Cysteine protease CPP32; CPP-32; Protein Yama; SREBP cleavage activity 1; SCA-1

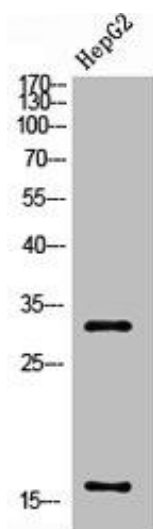
Immunogen:

Synthesized peptide derived from the Internal region of human Caspase-3 p17.

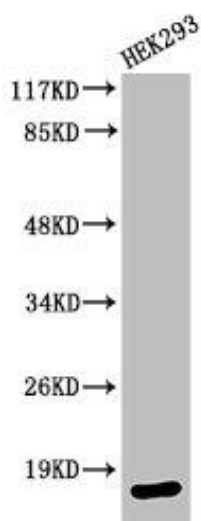
Storage:

Liquid in PBS containing 50% glycerol, 0.5% BSA and 0.02% sodium azide.

Product Images



Western Blot analysis of HepG2 cells using Cleaved-Caspase-3 p17 (D175) Polyclonal Antibody.



Western Blot analysis of HEK293 cells using Cleaved-Caspase-3 p17 (D175) Polyclonal Antibody.