

# Cleaved-MMP10 (F99) Antibody



PACO06038

---

## Product Information

**Size:**

50ug

**Reactivity:**

Human

**Source:**

Rabbit

**Isotype:**

IgG

**Applications:**

ELISA, WB

**Recommended dilutions:**

ELISA:1:40000, WB:1:500-1:2000

**Protein Background:****Gene ID:**

MMP10

**Uniprot**

P09238

**Synonyms:**

MMP10; STMY2; Stromelysin-2; SL-2; Matrix metalloproteinase-10; MMP-10; Transin-2

**Immunogen:**

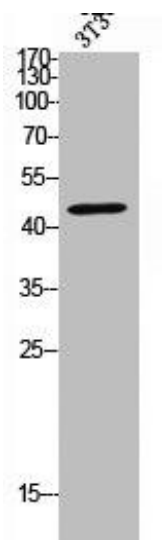
Synthesized peptide derived from the Internal region of human MMP-10.

**Storage:**

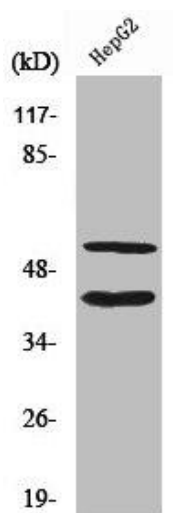
Liquid in PBS containing 50% glycerol, 0.5% BSA and 0.02% sodium azide.

## Product Images

---



Western Blot analysis of NIH-3T3 cells using Cleaved-MMP-10 (F99) Polyclonal Antibody.



Western Blot analysis of HepG2 cells using Cleaved-MMP-10 (F99) Polyclonal Antibody.