

Cleaved-MMP12 (G106) Antibody



PACO06039

Product Information

Size:

50ug

Reactivity:

Human

Source:

Rabbit

Isotype:

IgG

Applications:

ELISA, WB

Recommended dilutions:

ELISA:1:20000, WB:1:500-1:2000

Protein Background:

Gene ID:

MMP12

Uniprot

P39900

Synonyms:

MMP12; HME; Macrophage metalloelastase; MME; Macrophage elastase; ME; hME; Matrix metalloproteinase-12; MMP-12

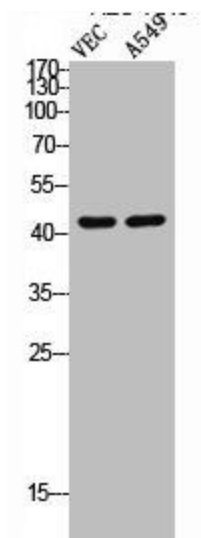
Immunogen:

Synthesized peptide derived from the Internal region of human MMP-12.

Storage:

Liquid in PBS containing 50% glycerol, 0.5% BSA and 0.02% sodium azide.

Product Images



Western Blot analysis of VEC A549 cells using Cleaved-MMP-12 (G106) Polyclonal Antibody.



Western Blot analysis of VEC cells using Cleaved-MMP-12 (G106) Polyclonal Antibody.