

Cleaved-NOTCH1 (V1754) Antibody



PACO06040

Product Information

Size:

50ug

Reactivity:

Human, Mouse, Rat

Source:

Rabbit

Isotype:

IgG

Applications:

ELISA, WB, IHC

Recommended dilutions:

ELISA:1:20000, WB:1:500-1:2000,
IHC:1:100-1:300

Protein Background:**Gene ID:**

NOTCH1

Uniprot

P46531

Synonyms:

NOTCH1; TAN1; Neurogenic locus notch homolog protein 1; Notch 1; hN1;
Translocation-associated notch protein TAN-1

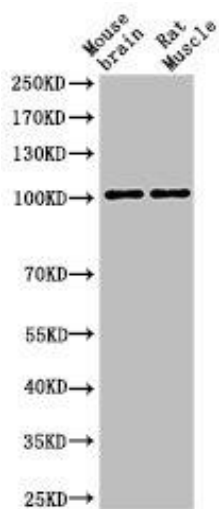
Immunogen:

Synthesized peptide derived from the Internal region of human Notch 1.

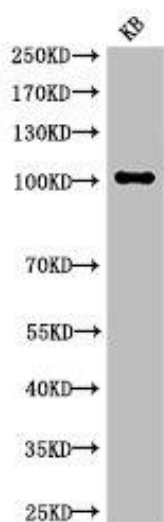
Storage:

Liquid in PBS containing 50% glycerol, 0.5% BSA and 0.02% sodium azide.

Product Images



Western Blot analysis of MOUSE-BRAIN RAT-MUSCLE cells using Cleaved-Notch 1 (V1754) Polyclonal Antibody.



Western Blot analysis of KB cells using Cleaved-Notch 1 (V1754) Polyclonal Antibody.