

Cleaved-NOTCH2 (D1733) Antibody



PACO06041

Product Information

Size:

50ug

Reactivity:

Human, Mouse, Rat

Source:

Rabbit

Isotype:

IgG

Applications:

ELISA, WB, IHC

Recommended dilutions:

ELISA:1:40000, WB:1:500-1:2000,
IHC:1:100-1:300

Protein Background:**Gene ID:**

NOTCH2

Uniprot

Q04721

Synonyms:

NOTCH2; Neurogenic locus notch homolog protein 2; Notch 2; hN2

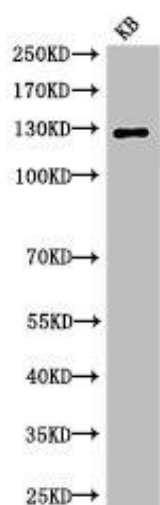
Immunogen:

Synthesized peptide derived from the Internal region of human Notch 2.

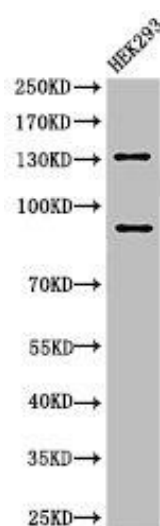
Storage:

Liquid in PBS containing 50% glycerol, 0.5% BSA and 0.02% sodium azide.

Product Images



Western Blot analysis of KB cells using Cleaved-Notch 2 (D1733) Polyclonal Antibody.



Western Blot analysis of 293 cells using Cleaved-Notch 2 (D1733) Polyclonal Antibody.