

Cleaved-SPTAN1 (D1185) Antibody



PACO06043

Product Information

Size:

50ug

Reactivity:

Human

Source:

Rabbit

Isotype:

IgG

Applications:

ELISA, WB

Recommended dilutions:

ELISA:1:10000, WB:1:500-1:2000

Protein Background:**Gene ID:**

SPTAN1

Uniprot

Q13813

Synonyms:

SPTAN1; NEAS; SPTA2; Spectrin alpha chain; non-erythrocytic 1; alpha-II spectrin; Fodrin alpha chain; Spectrin, non-erythroid alpha subunit

Immunogen:

Synthesized peptide derived from the Internal region of human Spectrin α II.

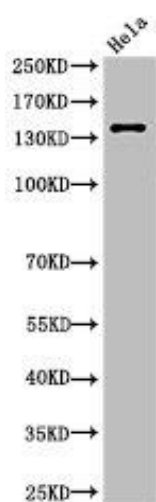
Storage:

Liquid in PBS containing 50% glycerol, 0.5% BSA and 0.02% sodium azide.

Product Images



Western Blot analysis of customer's (cat sample) using Cleaved-Spectrin alpha II (D1185) Polyclonal Antibody.



Western Blot analysis of HeLa cells using Cleaved-Spectrin alpha II (D1185) Polyclonal Antibody.