

Acetyl-Histone H4 (K16) Antibody



PACO06052

Product Information

Size:

50ug

Reactivity:

Human, Mouse, Rat

Source:

Rabbit

Isotype:

IgG

Applications:

ELISA, WB, IHC, IF

Recommended dilutions:

ELISA:1:5000, WB:1:500-1:2000, IHC:1:100-1:300, IF:1:200-1:1000

Protein Background:**Gene ID:**

HIST1H4A

Uniprot

P62805

Synonyms:

HIST1H4A; H4/A; H4FA; HIST1H4B; H4/I; H4FI; HIST1H4C; H4/G; H4FG; HIST1H4D; H4/B; H4FB; HIST1H4E; H4/J; H4FJ; HIST1H4F; H4/C; H4FC; HIST1H4H; H4/H; H4FH; HIST1H4I; H4/M; H4FM; HIST1H4J; H4/E; H4FE; HIST1H4K; H4/D; H4FD; HIST1H4L; H4/K; H4FK

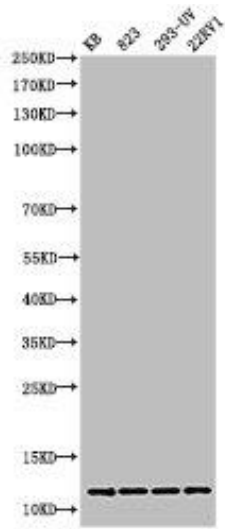
Immunogen:

Synthesized peptide derived from human Histone H4 around the acetylation site of K16.

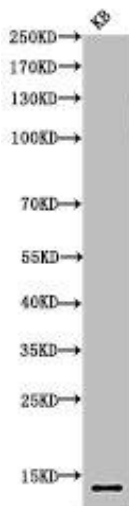
Storage:

Liquid in PBS containing 50% glycerol, 0.5% BSA and 0.02% sodium azide.

Product Images



Western Blot analysis of KB 823 293-UV 22RV1 cells using Acetyl-Histone H4 (K16) Polyclonal Antibody.



Western Blot analysis of KB cells using Acetyl-Histone H4 (K16) Polyclonal Antibody.