

# Acetyl-APEX1 (K6) Antibody



PACO06054

---

## Product Information

**Size:**

50ug

**Reactivity:**

Human

**Source:**

Rabbit

**Isotype:**

IgG

**Applications:**

ELISA, WB

**Recommended dilutions:**

ELISA:1:20000, WB:1:500-1:2000

**Protein Background:****Gene ID:**

APEX1

**Uniprot**

P27695

**Synonyms:**

APEX1; APE; APE1; APEX; APX; HAP1; REF1; DNA-(apurinic or apyrimidinic site) lyase; APEX nuclease; APEN; Apurinic-apyrimidinic endonuclease 1; AP endonuclease 1; APE-1; REF-1; Redox factor-1

**Immunogen:**

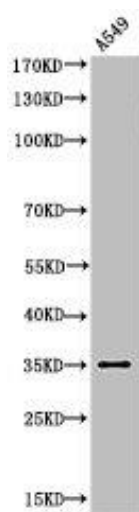
Synthesized peptide derived from the human Ref-1 around the acetylation site of K6.

**Storage:**

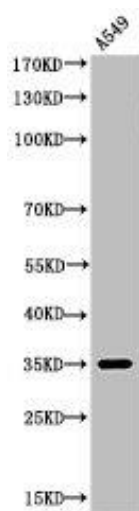
Liquid in PBS containing 50% glycerol, 0.5% BSA and 0.02% sodium azide.

## Product Images

---



Western Blot analysis of A549 cells using Acetyl-Ref-1 (K6) Polyclonal Antibody.



Western Blot analysis of A549 cells using Acetyl-Ref-1 (K6) Polyclonal Antibody.