

# Acetyl-KRT8 (K483) Antibody



PACO06063

---

## Product Information

**Size:**

50ug

**Reactivity:**

Human

**Source:**

Rabbit

**Isotype:**

IgG

**Applications:**

ELISA, WB

**Recommended dilutions:**

ELISA:1:20000, WB:1:500-1:2000

**Protein Background:**

**Gene ID:**

KRT8

**Uniprot**

P05787

**Synonyms:**

KRT8; CYK8; Keratin, type II cytoskeletal 8; Cytokeratin-8; CK-8; Keratin-8; K8; Type-II keratin Kb8

**Immunogen:**

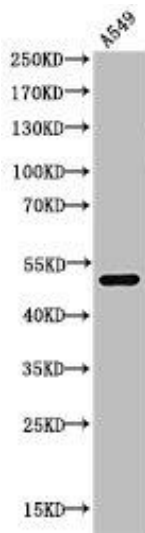
Synthesized peptide derived from the human Cytokeratin 8 around the acetylation site of K483.

**Storage:**

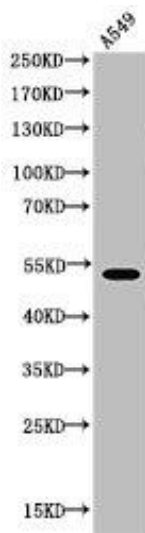
Liquid in PBS containing 50% glycerol, 0.5% BSA and 0.02% sodium azide.

## Product Images

---



Western Blot analysis of A549 cells using Acetyl-Cytokeratin 8 (K483) Polyclonal Antibody.



Western Blot analysis of A549 cells using Acetyl-Cytokeratin 8 (K483) Polyclonal Antibody.