

# Acetyl-NFE4 (K43) Antibody



PACO06074

---

## Product Information

**Size:**

50ug

**Reactivity:**

Human

**Source:**

Rabbit

**Isotype:**

IgG

**Applications:**

ELISA, WB

**Recommended dilutions:**

ELISA:1:20000, WB:1:500-1:2000

**Protein Background:****Gene ID:**

NFE4

**Uniprot**

Q86UQ8

**Synonyms:**

NFE4; Transcription factor NF-E4

**Immunogen:**

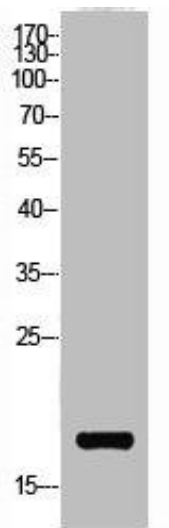
Synthesized peptide derived from the human NF-E4 around the acetylation site of K43.

**Storage:**

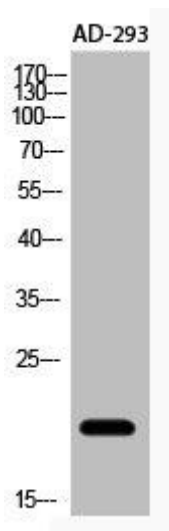
Liquid in PBS containing 50% glycerol, 0.5% BSA and 0.02% sodium azide.

## Product Images

---



Western Blot analysis of AD-293 cells using Acetyl-NF-E4 (K43) Polyclonal Antibody.



Western Blot analysis of AD-293 cells using Acetyl-NF-E4 (K43) Polyclonal Antibody.