

Acetyl-TP53 (K320) Antibody



PACO06076

Product Information

Size:

50ug

Reactivity:

Human

Source:

Rabbit

Isotype:

IgG

Applications:

ELISA, WB

Recommended dilutions:

ELISA:1:20000, WB:1:500-1:2000

Protein Background:**Gene ID:**

TP53

Uniprot

P04637

Synonyms:

TP53; P53; Cellular tumor antigen p53; Antigen NY-CO-13; Phosphoprotein p53; Tumor suppressor p53

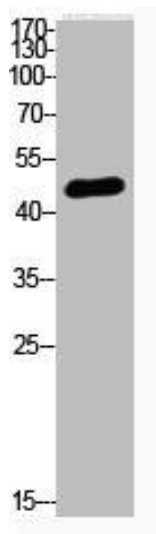
Immunogen:

Synthesized peptide derived from the human p53 around the acetylation site of K320.

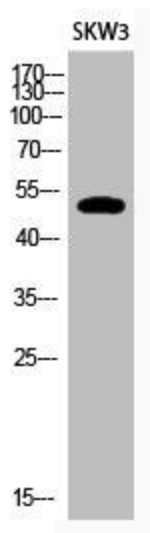
Storage:

Liquid in PBS containing 50% glycerol, 0.5% BSA and 0.02% sodium azide.

Product Images



Western Blot analysis of SKW3 cells using Acetyl-p53 (K320) Polyclonal Antibody.



Western Blot analysis of SKW3 cells using Acetyl-p53 (K320) Polyclonal Antibody.