

# Acetyl-CTTN (K235) Antibody



PACO06082

---

## Product Information

**Size:**

50ug

**Reactivity:**

Human, Mouse, Rat

**Source:**

Rabbit

**Isotype:**

IgG

**Applications:**

ELISA, WB

**Recommended dilutions:**

ELISA:1:10000, WB:1:500-1:2000

**Protein Background:****Gene ID:**

CTTN

**Uniprot**

Q14247

**Synonyms:**

CTTN; EMS1; Src substrate cortactin; Amplexin; Oncogene EMS1

**Immunogen:**

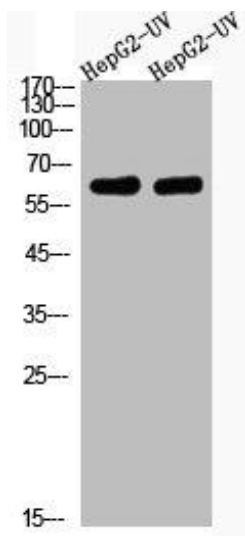
Synthesized peptide derived from the Internal region of human Cortactin around the acetylation site of K235.

**Storage:**

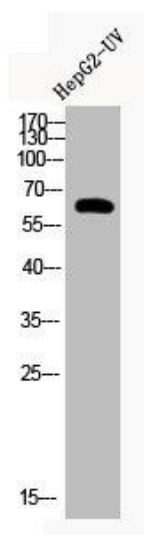
Liquid in PBS containing 50% glycerol, 0.5% BSA and 0.02% sodium azide.

## Product Images

---



Western Blot analysis of HepG2-UV cells using Acetyl-Cortactin (K235) Polyclonal Antibody.



Western Blot analysis of HEPG2-UV cells using Acetyl-Cortactin (K235) Polyclonal Antibody.