

# Acetyl-HSPA1A (K246) Antibody



PACO06085

---

## Product Information

**Size:**

50ug

**Reactivity:**

Human

**Source:**

Rabbit

**Isotype:**

IgG

**Applications:**

ELISA, WB

**Recommended dilutions:**

ELISA:1:10000, WB:1:500-1:2000

**Protein Background:****Gene ID:**

HSPA1A

**Uniprot**

P08107

**Synonyms:**

HSPA1A; HSPA1; HSPA1B; Heat shock 70 kDa protein 1A/1B; Heat shock 70 kDa protein 1/2; HSP70-1/HSP70-2; HSP70.1/HSP70.2

**Immunogen:**

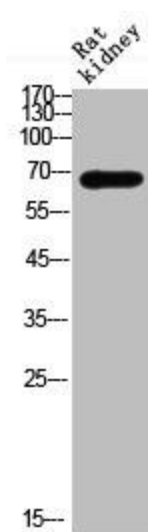
Synthesized peptide derived from the Internal region of human HSP70 around the acetylation site of K246.

**Storage:**

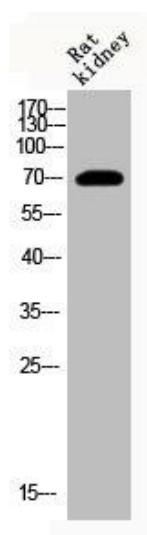
Liquid in PBS containing 50% glycerol, 0.5% BSA and 0.02% sodium azide.

## Product Images

---



Western Blot analysis of rat kidney cells using Acetyl-HSP70 (K246) Polyclonal Antibody.



Western Blot analysis of RAT-kidney cells using Acetyl-HSP70 (K246) Polyclonal Antibody.