

# Acetyl-RELA (K122) Antibody



PACO06086

---

## Product Information

**Size:**

50ug

**Reactivity:**

Human, Mouse, Rat

**Source:**

Rabbit

**Isotype:**

IgG

**Applications:**

ELISA, WB

**Recommended dilutions:**

ELISA:1:10000, WB:1:500-1:2000

**Protein Background:****Gene ID:**

RELA

**Uniprot**

Q04206

**Synonyms:**

RELA; NFKB3; Transcription factor p65; Nuclear factor NF- $\kappa$ B; -B p65 subunit; Nuclear factor of  $\kappa$ B; light polypeptide gene enhancer in B-cells 3

**Immunogen:**

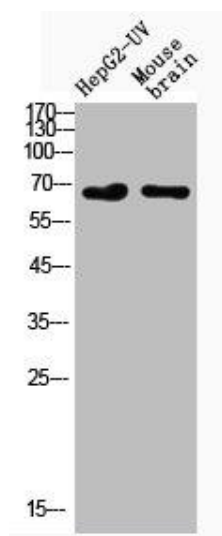
Synthesized peptide derived from the Internal region of human NF  $\kappa$ B; B-p65 around the acetylation site of K122.

**Storage:**

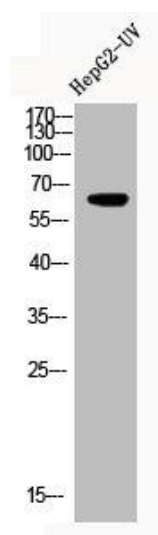
Liquid in PBS containing 50% glycerol, 0.5% BSA and 0.02% sodium azide.

## Product Images

---



Western Blot analysis of HepG2-UVmouse brain cells using Acetyl-NF kappa B-p65 (K122) Polyclonal Antibody.



Western Blot analysis of HEPG2-UV cells using Acetyl-NF kappa B-p65 (K122) Polyclonal Antibody.