

# Phospho-ATF2 (T71) Antibody



PACO06099

---

## Product Information

**Size:**

50ug

**Reactivity:**

Human, Mouse, Rat

**Source:**

Rabbit

**Isotype:**

IgG

**Applications:**

ELISA, WB, IHC, IP

**Recommended dilutions:**

ELISA:1:20000, WB:1:500-1:2000,  
IHC:1:100-1:300, IP:2-5ug

**Protein Background:****Gene ID:**

ATF2

**Uniprot**

P15336

**Synonyms:**

ATF2; CREB2; CREBP1; Cyclic AMP-dependent transcription factor ATF-2; cAMP-dependent transcription factor ATF-2; Activating transcription factor 2; Cyclic AMP-responsive element-binding protein 2; CREB-2; cAMP-responsive element-binding pro

**Immunogen:**

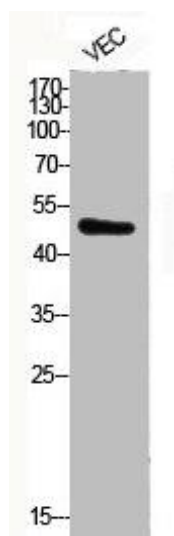
Synthesized peptide derived from human ATF-2 around the phosphorylation site of T71.

**Storage:**

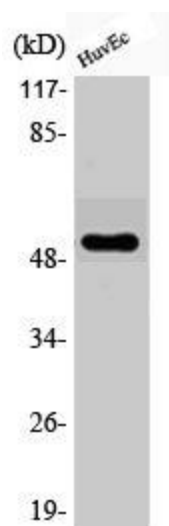
Liquid in PBS containing 50% glycerol, 0.5% BSA and 0.02% sodium azide.

## Product Images

---



Western Blot analysis of VEC cells using Phospho-ATF-2 (T71) Polyclonal Antibody.



Western Blot analysis of HuvEc cells using Phospho-ATF-2 (T71) Polyclonal Antibody.