

# Phospho-CTNNB1 (S37) Antibody



PACO06101

---

## Product Information

**Size:**

50ug

**Reactivity:**

Human, Mouse, Rat

**Source:**

Rabbit

**Isotype:**

IgG

**Applications:**

ELISA, WB, IHC, IF

**Recommended dilutions:**

ELISA:1:40000, WB:1:500-1:2000,  
IHC:1:100-1:300, IF:1:200-1:1000

**Protein Background:****Gene ID:**

CTNNB1

**Uniprot**

P35222

**Synonyms:**

CTNNB1; CTNNB; OK/SW-cl.35; Catenin beta-1; beta-catenin

**Immunogen:**

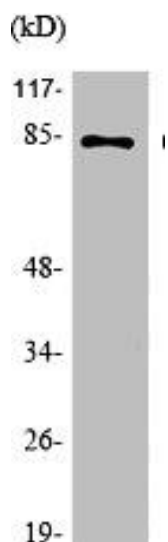
Synthesized peptide derived from human Catenin- &beta; around the phosphorylation site of S37.

**Storage:**

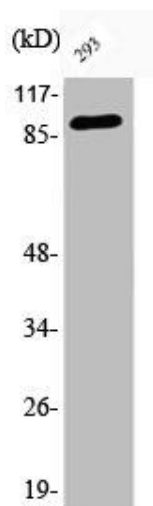
Liquid in PBS containing 50% glycerol, 0.5% BSA and 0.02% sodium azide.

## Product Images

---



Western Blot analysis of various cells using Phospho-Catenin- beta (S37) Polyclonal Antibody.



Western Blot analysis of 293 cells using Phospho-Catenin- beta (S37) Polyclonal Antibody.