

# Phospho-CTNNB1 (T41/S45) Antibody



PACO06102

---

## Product Information

**Size:**

50ug

**Reactivity:**

Human, Mouse, Rat

**Source:**

Rabbit

**Isotype:**

IgG

**Applications:**

ELISA, WB

**Recommended dilutions:**

ELISA:1:20000, WB:1:500-1:2000

**Protein Background:****Gene ID:**

CTNNB1

**Uniprot**

P35222

**Synonyms:**

CTNNB1; CTNNB; OK/SW-cl.35; Catenin beta-1; beta-catenin

**Immunogen:**

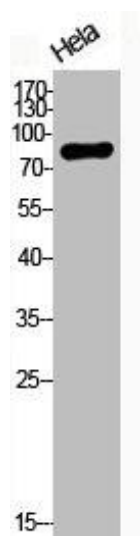
Synthesized peptide derived from human Catenin- &beta; around the phosphorylation site of T41/S45.

**Storage:**

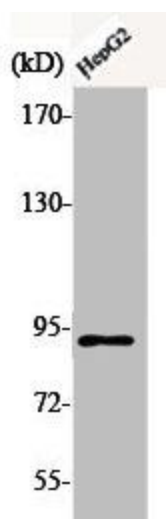
Liquid in PBS containing 50% glycerol, 0.5% BSA and 0.02% sodium azide.

## Product Images

---



Western Blot analysis of HELA cells using Phospho-Catenin- beta (T41/S45) Polyclonal Antibody.



Western Blot analysis of HepG2 cells using Phospho-Catenin- beta (T41/S45) Polyclonal Antibody.