

# Phospho-CDK1 (T161) Antibody



PACO06104

---

## Product Information

**Size:**

50ug

**Reactivity:**

Human, Mouse, Rat

**Source:**

Rabbit

**Isotype:**

IgG

**Applications:**

ELISA, WB, IHC

**Recommended dilutions:**

ELISA:1:5000, WB:1:500-1:2000, IHC:1:100-1:300

**Protein Background:**

**Gene ID:**

CDK1

**Uniprot**

P06493

**Synonyms:**

CDK1; CDC2; CDC28A; CDKN1; P34CDC2; Cyclin-dependent kinase 1; CDK1; Cell division control protein 2 homolog; Cell division protein kinase 1; p34 protein kinase

**Immunogen:**

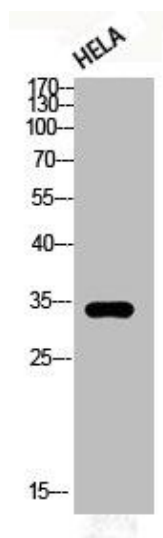
Synthesized peptide derived from human Cdc2 around the phosphorylation site of T161.

**Storage:**

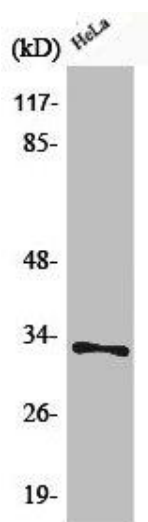
Liquid in PBS containing 50% glycerol, 0.5% BSA and 0.02% sodium azide.

## Product Images

---



Western Blot analysis of HELA cells using Phospho-Cdc2 (T161) Polyclonal Antibody.



Western Blot analysis of HeLa cells using Phospho-Cdc2 (T161) Polyclonal Antibody.