

Phospho-CDC25B (S323) Antibody



PACO06105

Product Information

Size:

50ug

Reactivity:

Human, Mouse, Rat

Source:

Rabbit

Isotype:

IgG

Applications:

ELISA, WB

Recommended dilutions:

ELISA:1:20000, WB:1:500-1:2000

Protein Background:**Gene ID:**

CDC25B

Uniprot

P30305

Synonyms:

CDC25B; CDC25HU2; M-phase inducer phosphatase 2; Dual specificity phosphatase Cdc25B

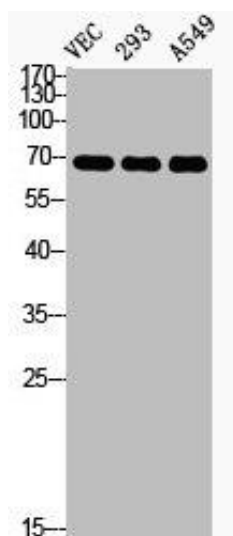
Immunogen:

Synthesized peptide derived from human Cdc25B around the phosphorylation site of S323.

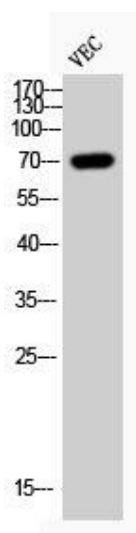
Storage:

Liquid in PBS containing 50% glycerol, 0.5% BSA and 0.02% sodium azide.

Product Images



Western Blot analysis of VEC 293 A549 cells using Phospho-Cdc25B (S323) Polyclonal Antibody.



Western Blot analysis of VEC cells using Phospho-Cdc25B (S323) Polyclonal Antibody.