

# Phospho-CDK1/CDK2/CDK3 (T14) Antibody



PACO06107

---

## Product Information

**Size:**

50ug

**Reactivity:**

Human, Mouse, Rat, Monkey

**Source:**

Rabbit

**Isotype:**

IgG

**Applications:**

ELISA, WB, IF

**Recommended dilutions:**

ELISA:1:5000, WB:1:500-1:2000, IF:1:200-1:1000

**Protein Background:****Gene ID:**

CDK1/CDK2/CDK3

**Uniprot**

P06493/P24941/Q00526

**Synonyms:**

CDK1; CDC2; CDC28A; CDKN1; P34CDC2; Cyclin-dependent kinase 1; CDK1; Cell division control protein 2 homolog; Cell division protein kinase 1; p34 protein kinase; CDK2; CDKN2; Cyclin-dependent kinase 2; Cell division protein kinase 2; p33 pr

**Immunogen:**

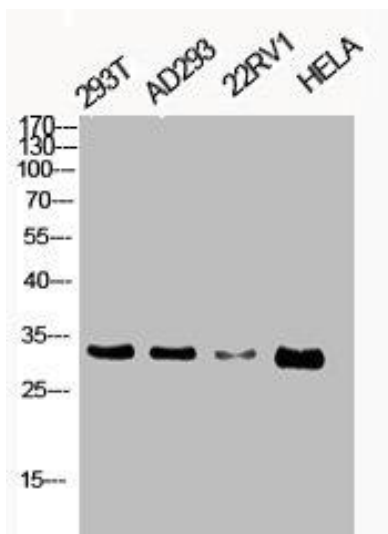
Synthesized peptide derived from human Cdk1/2/3 around the phosphorylation site of T14.

**Storage:**

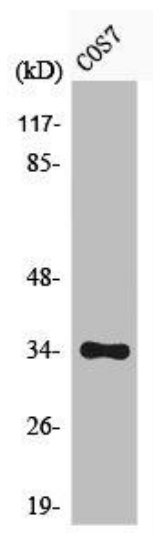
Liquid in PBS containing 50% glycerol, 0.5% BSA and 0.02% sodium azide.

## Product Images

---



Western Blot analysis of 293T AD293 22RV1 HELA cells using Phospho-Cdk1/2/3 (T14) Polyclonal Antibody.



Western Blot analysis of COS7 cells using Phospho-Cdk1/2/3 (T14) Polyclonal Antibody.