

Phospho-CHEK2 (T68) Antibody



PACO06108

Product Information

Size:

50ug

Reactivity:

Human, Mouse, Rat

Source:

Rabbit

Isotype:

IgG

Applications:

ELISA, WB, IHC

Recommended dilutions:

ELISA:1:20000, WB:1:500-1:2000,
IHC:1:100-1:300

Protein Background:

Gene ID:

CHEK2

Uniprot

O96017

Synonyms:

CHEK2; CDS1; CHK2; RAD53; Serine/threonine-protein kinase Chk2; CHK2 checkpoint homolog; Cds1 homolog; Hucds1; hCds1; Checkpoint kinase 2

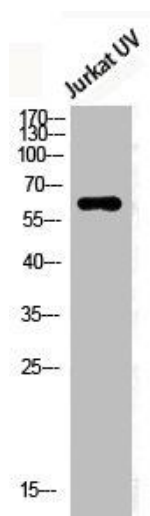
Immunogen:

Synthesized peptide derived from human Chk2 around the phosphorylation site of T68.

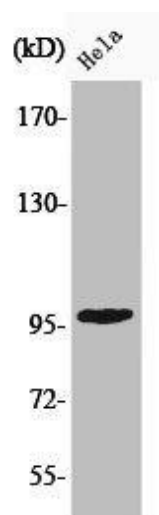
Storage:

Liquid in PBS containing 50% glycerol, 0.5% BSA and 0.02% sodium azide.

Product Images



Western Blot analysis of Jurkat-UV cells using Phospho-Chk2 (T68) Polyclonal Antibody.



Western Blot analysis of HELA cells using Phospho-Chk2 (T68) Polyclonal Antibody.