

Phospho-MYC (T58) Antibody



PACO06109

Product Information

Size:

50ug

Reactivity:

Human, Mouse, Rat

Source:

Rabbit

Isotype:

IgG

Applications:

ELISA, WB, IHC, IP

Recommended dilutions:

ELISA:1:10000, WB:1:500-1:2000,
IHC:1:100-1:300, IP:2-5ug

Protein Background:**Gene ID:**

MYC

Uniprot

P01106

Synonyms:

MYC; BHLHE39; Myc proto-oncogene protein; Class E basic helix-loop-helix protein 39; bHLHe39; Proto-oncogene c-Myc; Transcription factor p64

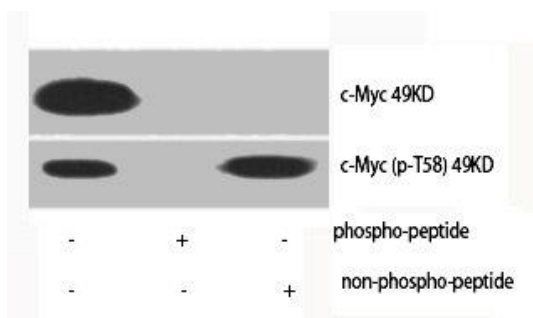
Immunogen:

Synthesized peptide derived from human c-Myc around the phosphorylation site of T58.

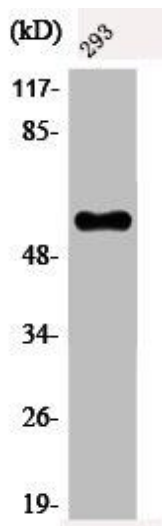
Storage:

Liquid in PBS containing 50% glycerol, 0.5% BSA and 0.02% sodium azide.

Product Images



Western Blot analysis of various cells using Phospho-c-Myc (T58) Polyclonal Antibody.



Western Blot analysis of 293 cells using Phospho-c-Myc (T58) Polyclonal Antibody.