

Phospho-CREB1 (S133) Antibody



PACO06111

Product Information

Size:

50ug

Reactivity:

Human, Mouse, Rat

Source:

Rabbit

Isotype:

IgG

Applications:

ELISA, WB, IHC, IP

Recommended dilutions:

ELISA:1:10000, WB:1:500-1:2000,
IHC:1:100-1:300, IP:2-5ug

Protein Background:**Gene ID:**

CREB1

Uniprot

P16220

Synonyms:

CREB1; Cyclic AMP-responsive element-binding protein 1; CREB-1; cAMP-responsive element-binding protein 1

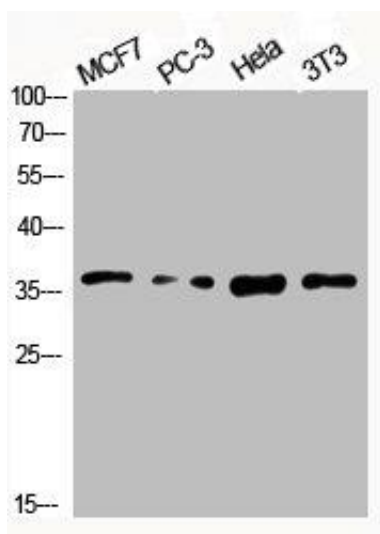
Immunogen:

Synthesized peptide derived from human CREB-1 around the phosphorylation site of S133.

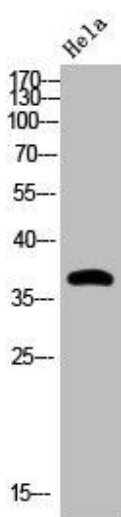
Storage:

Liquid in PBS containing 50% glycerol, 0.5% BSA and 0.02% sodium azide.

Product Images



Western Blot analysis of MCF7 PC-3 HELA NIH-3T3 cells using Phospho-CREB-1 (S133) Polyclonal Antibody.



Western Blot analysis of HELA cells using Phospho-CREB-1 (S133) Polyclonal Antibody.