

Phospho-SRC (Y529) Antibody



PACO06112

Product Information

Size:

50ug

Reactivity:

Human, Mouse, Rat, Monkey

Source:

Rabbit

Isotype:

IgG

Applications:

ELISA, WB, IHC

Recommended dilutions:

ELISA:1:10000, WB:1:500-1:2000,
IHC:1:100-1:300

Protein Background:

Gene ID:

SRC

Uniprot

P12931

Synonyms:

SRC; SRC1; Proto-oncogene tyrosine-protein kinase Src; Proto-oncogene c-Src; pp60c-src; p60-Src

Immunogen:

Synthesized peptide derived from human c-Src around the phosphorylation site of Y529.

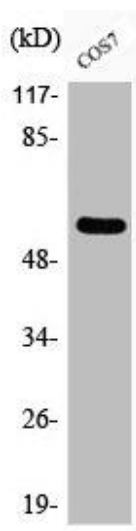
Storage:

Liquid in PBS containing 50% glycerol, 0.5% BSA and 0.02% sodium azide.

Product Images



Western Blot analysis of NIH-3T3 cells using Phospho-c-Src (Y529) Polyclonal Antibody.



Western Blot analysis of COS7 cells using Phospho-c-Src (Y529) Polyclonal Antibody.