

Phospho-CCNE1 (T395) Antibody



PACO06113

Product Information

Size:

50ug

Reactivity:

Human

Source:

Rabbit

Isotype:

IgG

Applications:

ELISA, WB, IHC

Recommended dilutions:

ELISA:1:10000, WB:1:500-1:2000,
IHC:1:100-1:300

Protein Background:**Gene ID:**

CCNE1

Uniprot

P24864

Synonyms:

CCNE1; CCNE; G1/S-specific cyclin-E1

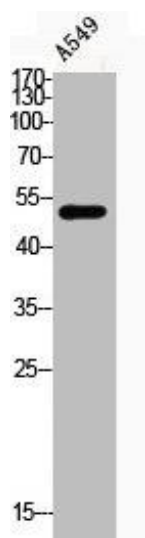
Immunogen:

Synthesized peptide derived from human Cyclin E1 around the phosphorylation site of T395.

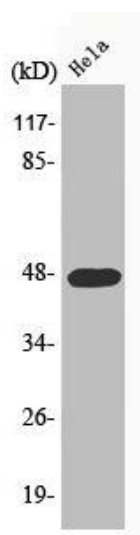
Storage:

Liquid in PBS containing 50% glycerol, 0.5% BSA and 0.02% sodium azide.

Product Images



Western Blot analysis of A549 cells using Phospho-Cyclin E1 (T395) Polyclonal Antibody.



Western Blot analysis of HeLa cells using Phospho-Cyclin E1 (T395) Polyclonal Antibody.