

Phospho-EGFR (Y1197) Antibody



PACO06115

Product Information

Size:

50ug

Reactivity:

Human, Mouse, Rat

Source:

Rabbit

Isotype:

IgG

Applications:

ELISA, WB, IHC

Recommended dilutions:

ELISA:1:10000, WB:1:500-1:2000,
IHC:1:100-1:300

Protein Background:**Gene ID:**

EGFR

Uniprot

P00533

Synonyms:

EGFR; ERBB; ERBB1; HER1; Epidermal growth factor receptor; Proto-oncogene c-ErbB-1; Receptor tyrosine-protein kinase erbB-1

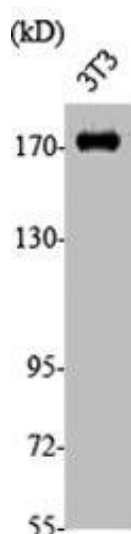
Immunogen:

Synthesized peptide derived from human EGFR around the phosphorylation site of Y1197.

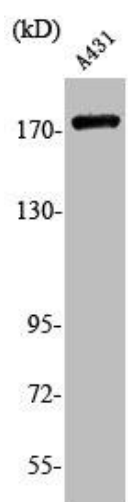
Storage:

Liquid in PBS containing 50% glycerol, 0.5% BSA and 0.02% sodium azide.

Product Images



Western Blot analysis of NIH-3T3 cells using Phospho-EGFR (Y1197) Polyclonal Antibody.



Western Blot analysis of A431 cells using Phospho-EGFR (Y1197) Polyclonal Antibody.