

Phospho-MAPK3/MAPK1 (T202) Antibody



PACO06117

Product Information

Size:

50ug

Reactivity:

Human, Mouse, Rat

Source:

Rabbit

Isotype:

IgG

Applications:

ELISA, WB

Recommended dilutions:

ELISA:1:10000, WB:1:500-1:2000

Protein Background:**Gene ID:**

MAPK3/MAPK1

Uniprot

P27361/P28482

Synonyms:

MAPK3; ERK1; PRKM3; Mitogen-activated protein kinase 3; MAP kinase 3; MAPK 3; ERT2; Extracellular signal-regulated kinase 1; ERK-1; Insulin-stimulated MAP2 kinase; MAP kinase isoform p44; p44-MAPK; Microtubule-associated protein 2 kinase; p

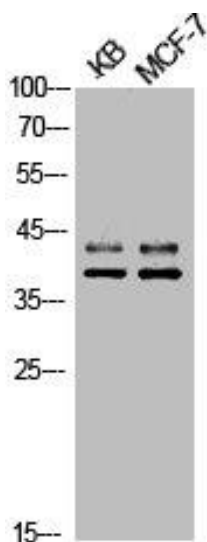
Immunogen:

Synthesized peptide derived from human ERK 1/2 around the phosphorylation site of T202.

Storage:

Liquid in PBS containing 50% glycerol, 0.5% BSA and 0.02% sodium azide.

Product Images



Western Blot analysis of KB MCF7 cells using Phospho-ERK 1/2 (T202) Polyclonal Antibody.



Western Blot analysis of KB cells using Phospho-ERK 1/2 (T202) Polyclonal Antibody.