

Phospho-GSK3A/GSK3B (Y279/216) Antibody



PACO06122

Product Information

Size:

50ug

Reactivity:

Human, Mouse, Rat

Source:

Rabbit

Isotype:

IgG

Applications:

ELISA, WB, IHC

Recommended dilutions:

ELISA:1:20000, WB:1:500-1:2000,
IHC:1:100-1:300

Protein Background:**Gene ID:**

GSK3A/GSK3B

Uniprot

P49840/P49841

Synonyms:

GSK3A; Glycogen synthase kinase-3 alpha; GSK-3 alpha; Serine/threonine-protein kinase GSK3A; GSK3B; Glycogen synthase kinase-3 beta; GSK-3 beta; Serine/threonine-protein kinase GSK3B

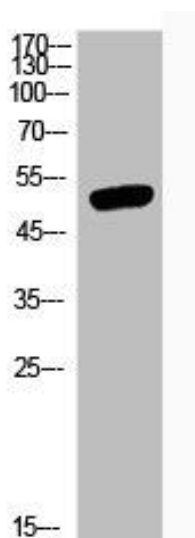
Immunogen:

Synthesized peptide derived from human GSK3 α / β around the phosphorylation site of Y279/216.

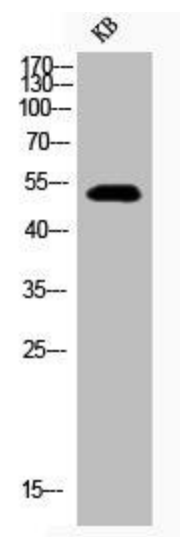
Storage:

Liquid in PBS containing 50% glycerol, 0.5% BSA and 0.02% sodium azide.

Product Images



Western Blot analysis of various cells using Phospho-GSK3 alpha / beta (Y279/216) Polyclonal Antibody.



Western Blot analysis of KB cells using Phospho-GSK3alpha / beta (Y279/216) Polyclonal Antibody.