

Phospho-IGF1R/INSR (Y1161) Antibody



PACO06130

Product Information

Size:

50ug

Reactivity:

Human, Mouse, Rat

Source:

Rabbit

Isotype:

IgG

Applications:

ELISA, WB, IHC, IP

Recommended dilutions:

ELISA:1:20000, WB:1:500-1:2000,
IHC:1:100-1:300, IP:2-5ug

Protein Background:**Gene ID:**

IGF1R/INSR

Uniprot

P08069/P06213

Synonyms:

IGF1R; Insulin-like growth factor 1 receptor; Insulin-like growth factor I receptor; IGF-I receptor; CD antigen CD221; INSR; Insulin receptor; IR; CD antigen CD220

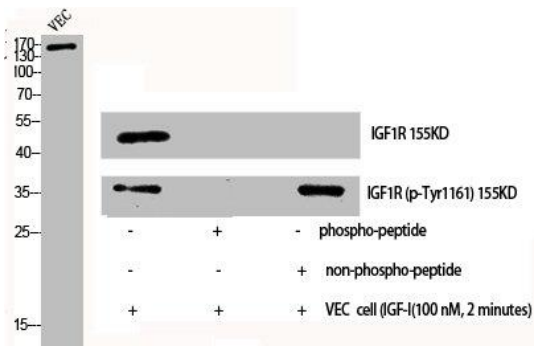
Immunogen:

Synthesized peptide derived from human IGF-IR around the phosphorylation site of Y1161.

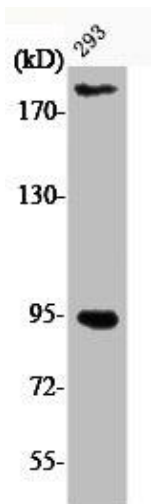
Storage:

Liquid in PBS containing 50% glycerol, 0.5% BSA and 0.02% sodium azide.

Product Images



Western Blot analysis of VEC cells using Phospho-IGF-IR (Y1161) Polyclonal Antibody.



Western Blot analysis of 293 cells using Phospho-IGF-IR (Y1161) Polyclonal Antibody.