

# Phospho-IGF1R (Y1165/Y1166) Antibody



PACO06131

---

## Product Information

**Size:**

50ug

**Reactivity:**

Human, Mouse, Rat, Monkey

**Source:**

Rabbit

**Isotype:**

IgG

**Applications:**

ELISA, WB

**Recommended dilutions:**

ELISA:1:20000, WB:1:500-1:2000

**Protein Background:****Gene ID:**

IGF1R

**Uniprot**

P08069

**Synonyms:**

IGF1R; Insulin-like growth factor 1 receptor; Insulin-like growth factor I receptor; IGF-I receptor; CD antigen CD221

**Immunogen:**

Synthesized peptide derived from human IGF-1R around the phosphorylation site of Y1165/Y1166.

**Storage:**

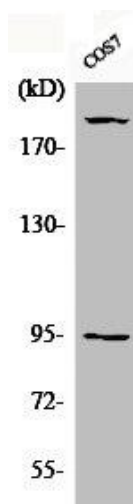
Liquid in PBS containing 50% glycerol, 0.5% BSA and 0.02% sodium azide.

## Product Images

---



Western Blot analysis of K562 cells using Phospho-IGF-IR (Y1165/Y1166) Polyclonal Antibody.



Western Blot analysis of COS7 cells using Phospho-IGF-IR (Y1165/Y1166) Polyclonal Antibody.