

# Phospho-IRS1 (S307) Antibody



PACO06133

---

## Product Information

**Size:**

50ug

**Reactivity:**

Human, Mouse, Rat

**Source:**

Rabbit

**Isotype:**

IgG

**Applications:**

ELISA, WB, IHC, IF

**Recommended dilutions:**

ELISA:1:10000, WB:1:500-1:2000,  
IHC:1:100-1:300, IF:1:200-1:1000

**Protein Background:****Gene ID:**

IRS1

**Uniprot**

P35568

**Synonyms:**

IRS1; Insulin receptor substrate 1; IRS-1

**Immunogen:**

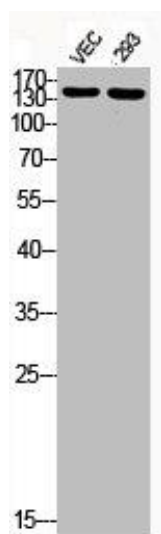
Synthesized peptide derived from human IRS-1 around the phosphorylation site of S307.

**Storage:**

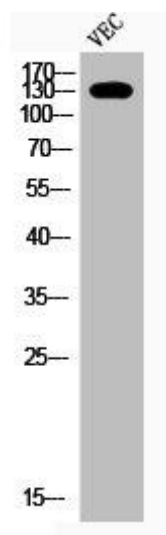
Liquid in PBS containing 50% glycerol, 0.5% BSA and 0.02% sodium azide.

## Product Images

---



Western Blot analysis of VEC 293 cells using Phospho-IRS-1 (S307) Polyclonal Antibody.



Western Blot analysis of VEC cells using Phospho-IRS-1 (S307) Polyclonal Antibody.