

# Phospho-JAK1 (Y1022) Antibody



PACO06136

---

## Product Information

**Size:**

50ug

**Reactivity:**

Human, Mouse, Rat

**Source:**

Rabbit

**Isotype:**

IgG

**Applications:**

ELISA, WB, IHC

**Recommended dilutions:**

ELISA:1:10000, WB:1:500-1:2000,  
IHC:1:100-1:300

**Protein Background:****Gene ID:**

JAK1

**Uniprot**

P23458

**Synonyms:**

JAK1; JAK1A; JAK1B; Tyrosine-protein kinase JAK1; Janus kinase 1; JAK-1

**Immunogen:**

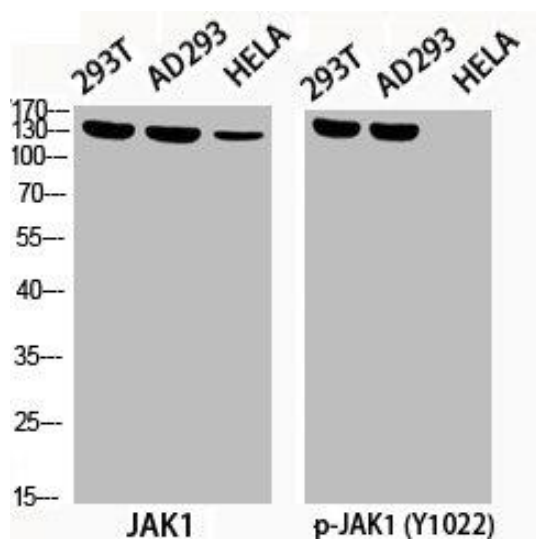
Synthesized peptide derived from human JAK1 around the phosphorylation site of Y1022.

**Storage:**

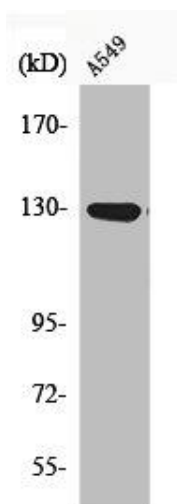
Liquid in PBS containing 50% glycerol, 0.5% BSA and 0.02% sodium azide.

## Product Images

---



Western Blot analysis of 293T AD293 HELA cells using Phospho-JAK1 (Y1022) Polyclonal Antibody.



Western Blot analysis of A549 cells using Phospho-JAK1 (Y1022) Polyclonal Antibody.