

Phospho-MAP2K1/MAP2K2 (S218/222) Antibody



PACO06140

Product Information

Size:

50ug

Reactivity:

Human, Mouse, Rat

Source:

Rabbit

Isotype:

IgG

Applications:

ELISA, WB, IHC

Recommended dilutions:

ELISA:1:5000, WB:1:500-1:2000, IHC:1:100-1:300

Protein Background:**Gene ID:**

MAP2K1/MAP2K2

Uniprot

Q02750/P36507

Synonyms:

MAP2K1; MEK1; PRKMK1; Dual specificity mitogen-activated protein kinase kinase 1; MAP kinase kinase 1; MAPKK 1; MKK1; ERK activator kinase 1; MAPK/ERK kinase 1; MEK 1; MAP2K2; MEK2; MKK2; PRKMK2; Dual specificity mitogen-activated protein k

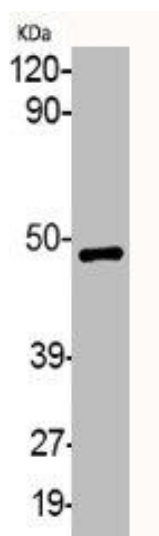
Immunogen:

Synthesized peptide derived from human MEK-1/2 around the phosphorylation site of S218/222.

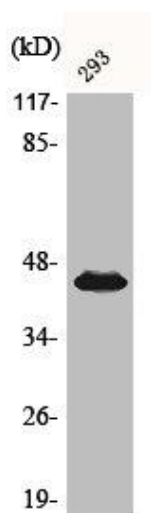
Storage:

Liquid in PBS containing 50% glycerol, 0.5% BSA and 0.02% sodium azide.

Product Images



Western Blot analysis of various cells using Phospho-MEK-1/2 (S218/222) Polyclonal Antibody.



Western Blot analysis of 293 cells using Phospho-MEK-1/2 (S218/222) Polyclonal Antibody.